

DESCRIPTION

The EEL LED Flush Mount Ceiling Light Fixtures features a painted brushed nickel finish and a white acrylic diffuser. It is perfect for commercial and residential applications. Ideal for hallways, kitchens and bedrooms.

SPECIFICATION FEATURES

Construction

Die formed 22 gauge galvanized steel painted brushed nickel finish
3 sizes: 10.75-inch, 13.75-inch and 18-inch

Finish

Steel formed painted nickel

Controls

The CL Ceiling Light series is powered by Ultrasave Drivers

Shielding

Smooth white acrylic and glass lens offers visual comfort

Electrical

Long Life LED System complete with electrical driver to deliver the optimal performance. LED's available in a 3000K with a typical CRI: 80. Rated for 94,000 hours. Electronic drivers are available in 120 or 120/277 Volt applications

Compliance

Modules and Drivers are UL recognized components and indoor luminaries are cULus listed

Driver and Module Access

Drivers can be accessed by taking off the screws from the top of the housing and removing the lens

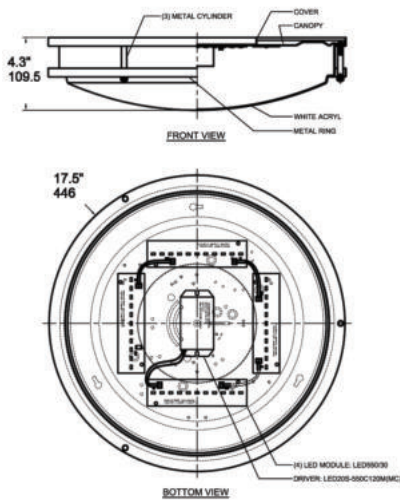
Warranty

5 years

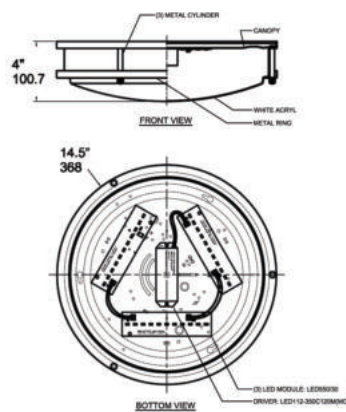


**LED
CEILING LIGHTS**
10.75-inch, 13.75-inch
and 18-inch

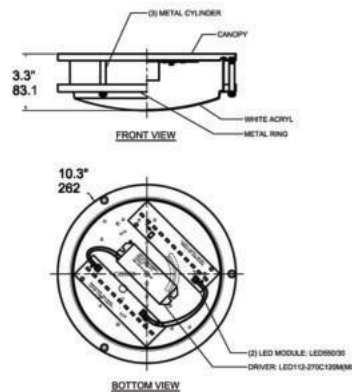
powered by
ULTRASAVE



CL-T9802-LED04
Dimension
mm | 446(D) x 109.5(H)
inch | 17.5"(D) x 4.3(H)






CL-T9802A-LED03
Dimension
mm | 368(D) x 100.7(H)
inch | 14.5"(D) x 4"(H)



CL-T9802B-LED02
Dimension
mm | 262(D) x 83.1(H)
inch | 10.3"(D) x 3.3"(H)

ORDERING CODE, ENERGY AND PERFORMANCE DATA

	Model No.	Delivered Lumens (lm)	Input Watts (W)	Voltage (V)	Colour Temp. (K)	Efficacy (lm/W)	Status
	CL-T9802-LED04 18-inch	2170	23	120 / 120M	3000K	94	Stock
	CL-T9802A-LED03 13.75-inch	1320	14	120 / 120M	3000K	94	Stock
	CL-T9802B-LED02 10.75-inch	1060	11.5	120 / 120M	3000K	92	Stock

SHIPPING DATA

Model No.

CL-T9802-LED04
CL-T9802A-LED03
CL-T9802B-LED02

Weight

3kg / 6.6lbs
2kg / 4.4lbs
0.9kg / 2lbs



Energy Efficient Lighting Company Limited
331 Amber Street, Unit B, Markham, ON L3R 3J7 Canada
Tel: 905-415-8878 • 1-855-415-8878 | Fax: 905-415-8872 • 1-855-415-8872
Email: marketing@eelighting.ca | URL: www.eelighting.ca

Specifications and dimensions subject to change without notice.
Consult your Energy Efficient Lighting Representative
for availability and ordering information.